

MATERIALS LEGEND

WINDOW/DOOR FINISHES

(FG01) ALUMINUM FRAMES - POWDER COAT - SILVER GREY

OTHER METAL FINISHES

(ME01) POWDER COAT - MID GREY

(ME02) POWDER COAT - CHAMPAGNE

(ME03) POWDER COAT - GOLD

PAINT FINISHES (EXTERNAL)

(PE01) WHITE

(PE02) MID GREY

(PE03) SAND COLOUR

BALUSTRADE

(BL01) GLASS - GREY TINT

(BL03) METAL PALISADE - POWDER COAT - SILVER GREY

GLAZING

(GL01) APARTMENT GLAZING - GREY TINT

(GL02) CLEAR GLASS (TO RETAIL AND LOBBY ENTRIES)

(GL03) FROSTED GLASS

COLOURBACK GLASS

(GL04) COLOURBACK GLASS - GREY

(GL05) FROSTED GLASS - GREY

BRICKWORK / BLOCKWORK

(BW01) BLONDE BRICK

(BW02) LIGHT BRICK - WHITE

(BW03) GREY BRICK

LOUVRE BLADE FINISHES

(LV03) METAL BLADE - POWDER COAT - WHITE PEARLESCENT

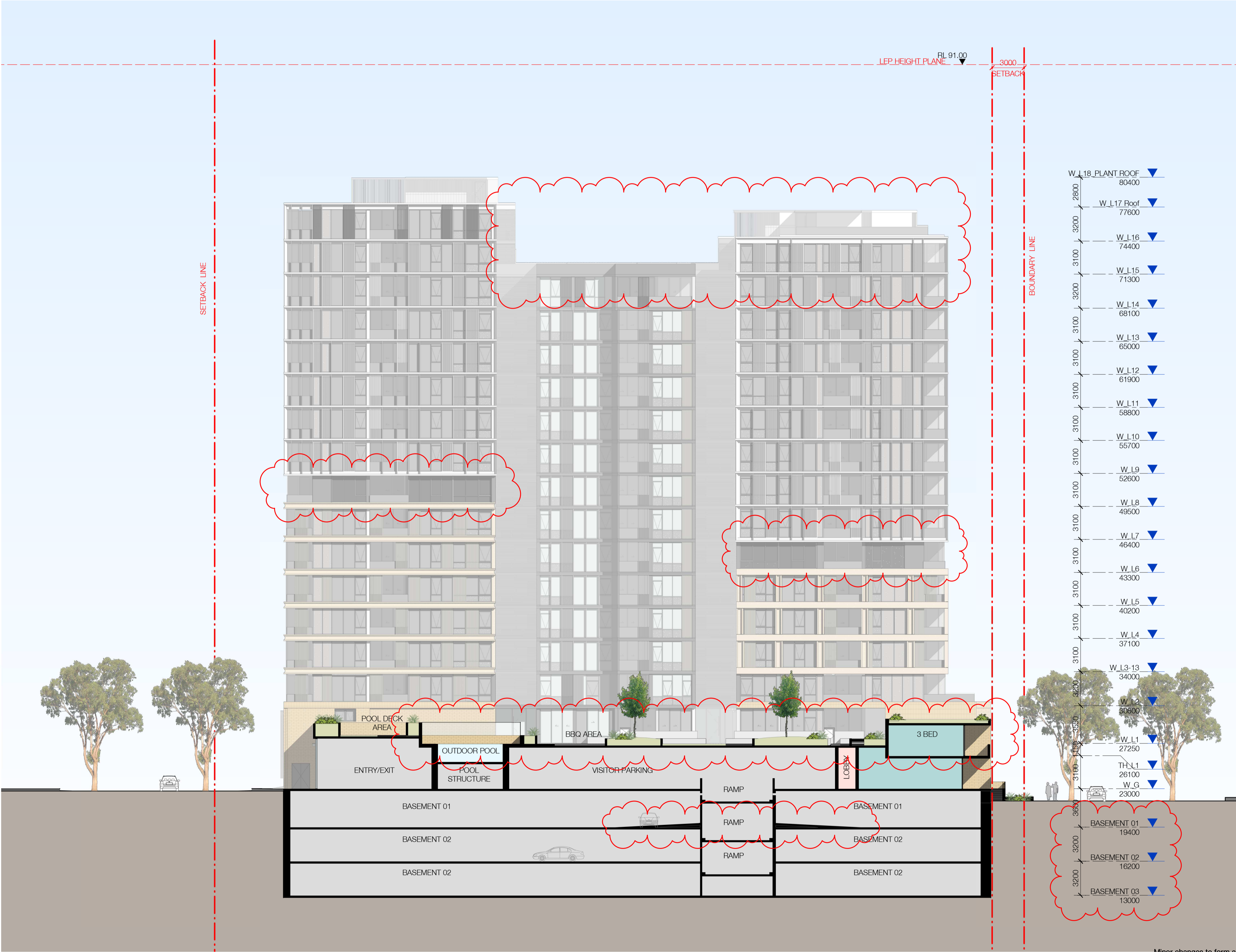
FACADE METAL WORK

(SM01) METAL SCREEN - CHAMPAGNE

(SM02) METAL SCREEN - WHITE PEARLESCENT

(SM03) METAL SCREEN - GREY

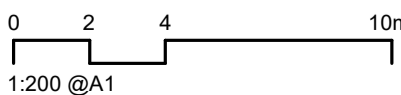
- ROOFTOP TERRACES ADDED TO PENTHOUSES
- REVISED ROOFTOP LEVELS
- RECESSED LEVELS APPLIED DARKER GLASS, AND GLAZING SETBACK 150mm
- COMMUNAL SPACE REDESIGNED BASEMENT LEVEL DROPPED AND EXTENSION OF 1:20 RAMP



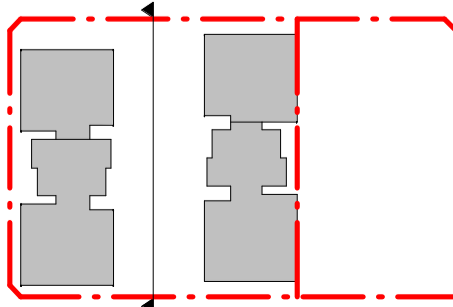
Minor changes to form and configuration may be required when drawings are subsequently prepared for design development and/or construction purposes after the grant of development consent.

In accepting and utilising this document the recipient agrees that SJB Architecture (NSW) Pty. Ltd. ACN 081 094 724 T/A SJB Architects, retain all common law, statutory law and other rights including copyright and intellectual property rights. The recipient agrees not to use this document for any purpose other than its intended use, to waive all claims against SJB Architects resulting from unauthorised changes, or to reuse the document on other projects without prior written consent from SJB Architects. Under no circumstances shall transfer of this document be deemed a sale. SJB Architects makes no warranties of fitness for any purpose. The Builder/Contractor shall verify job dimensions prior to any work commencing. Use figured dimensions only. Do not scale drawings.

Nominated Architects: Adam Haddow-7188 | John Pradel-7004



Rev	Date	Revision	By	Chk.
11	2020.12.18	FOR COORDINATION	JG	NH
12	2020.12.22	DA ISSUE	JG	NH
25	2021.03.01	INTERNAL REVIEW	JG	NH
28	2021.03.05	FOR INFORMATION	JG	NH
30	2021.03.09	DA ISSUE	JG	NH
31	2021.03.12	FOR INFORMATION	JG	NH
32	2021.03.18	DA ISSUE	JG	NH
33	2021.06.10	FOR INFORMATION	JG	NH
37	2021.08.26	DA ISSUE	JG	NH



Client

Project

BATA PAGEDWOOD - LOT E

Drawing Name

SECTION SHEET 1

Date	Scale	Sheet Size
2021.08.26	1 : 200	@ A1
Drawn	Chk.	Job No.
JG	NH	6354
Drawn No.	Revision	
DA-0601	/ 37	

SJB Architects
L2, 490 Crown St
Surry Hills NSW
2010 Australia
T 61 2 9380 9911
www.sjb.com.au

